

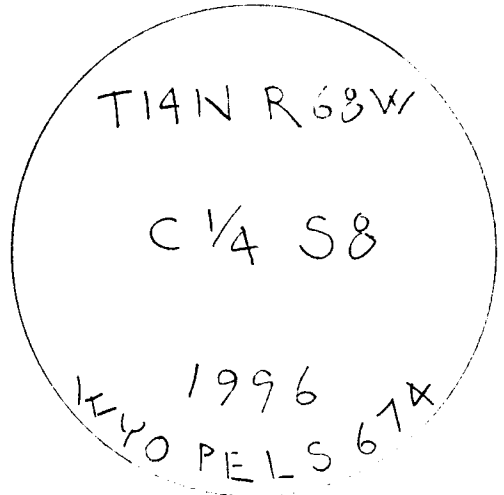
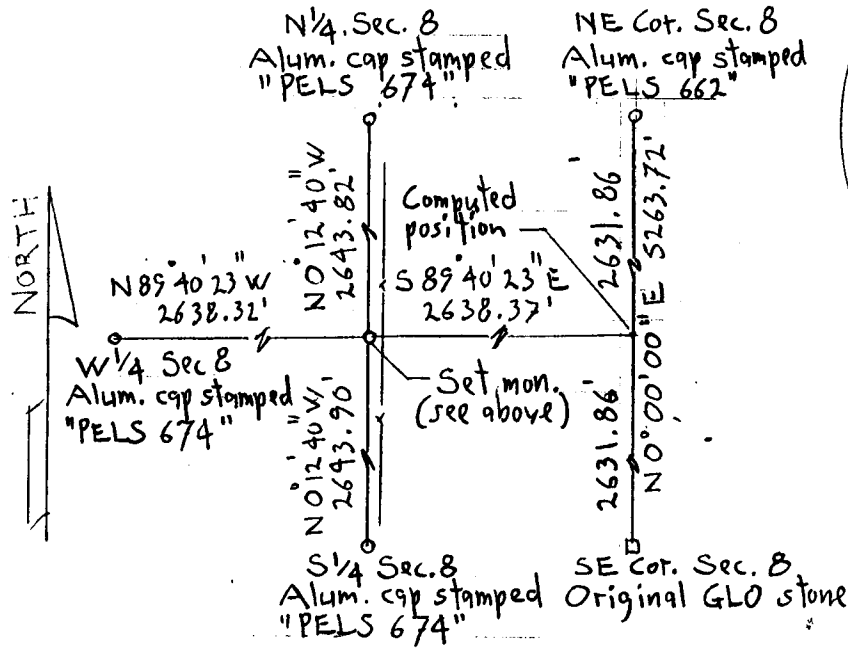
# State of Wyoming Corner Record

(In compliance with the *CORNER PERPETUATION AND FILING ACT*, Wyoming Statutes, 1977, Section 36-11-101, et. seq., and the Rules and Regulations of the Board of Registration for Professional Engineers and Professional Land Surveyors)

Reverse side of this form may be used if more space is needed.

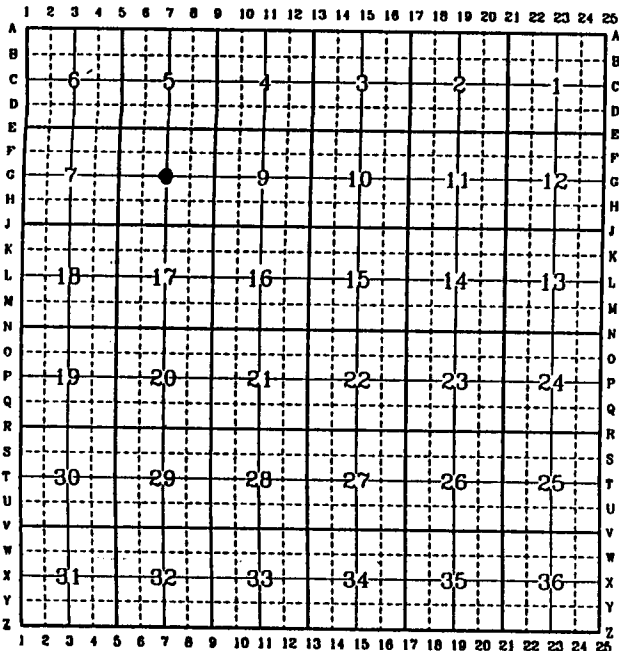
Record of original survey and citation of source of historical information (if corner is lost or obliterated). Description of corner monumentation evidence found and/or monument and accessories established to perpetuate the location of this corner. Sketch of relative location of monument, accessories, and reference points with course and distance to adjacent corner(s) (if determined in this survey). Method and rationale for reestablishment of lost or obliterated corner.

Set 3/4"  $\phi$  rebar with 2 1/2"  $\phi$  aluminum survey cap stamped as shown:



Date of Field Work: August 30, 1996 Office Reference: Roms 9 Sec. 8

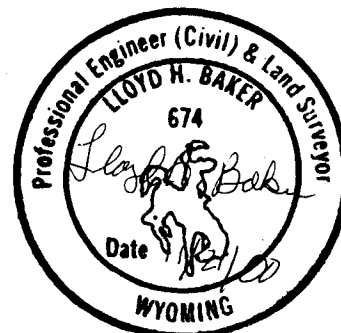
### CROSS INDEX DIAGRAM



Firm/Agency, Address

Lloyd H. Baker PELS # 674  
Gertsch/Baker & Assoc.  
215 So. 3rd St. suite 110  
Laramie, Wyoming 82070  
 Telephone Number: 307-742-6116

This corner record was prepared by me or under my direction and supervision.  
 SEAL & SIGNATURE



Corner Name: C 1/4 Sec. 8 Section: 8 T 14N R 68W; 6th P.M. Cross-Index No.: 67  
 SBRPEPLS/PLSW: March 1994